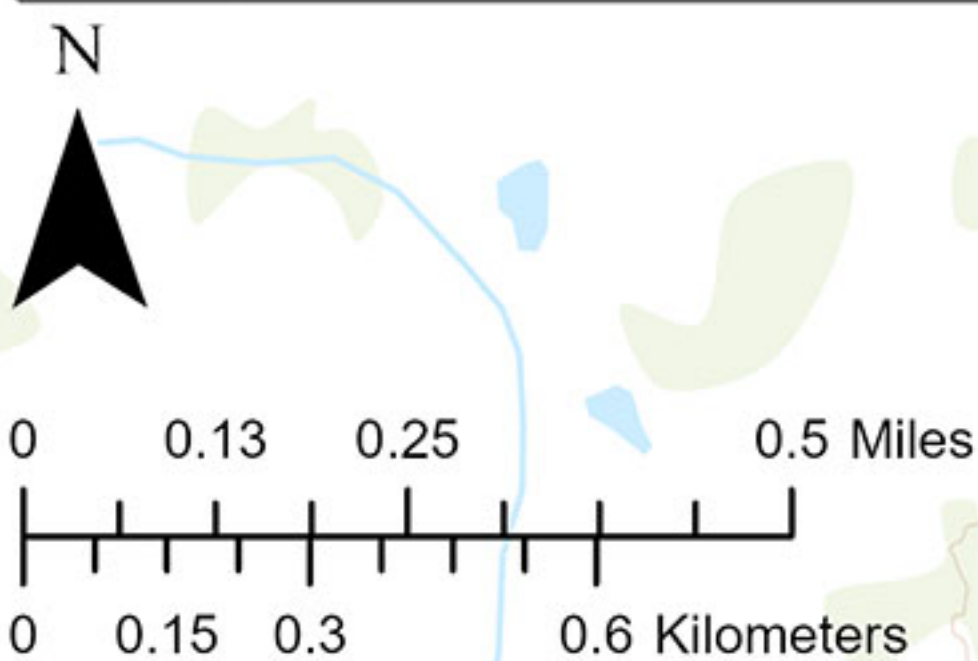


Change Analysis

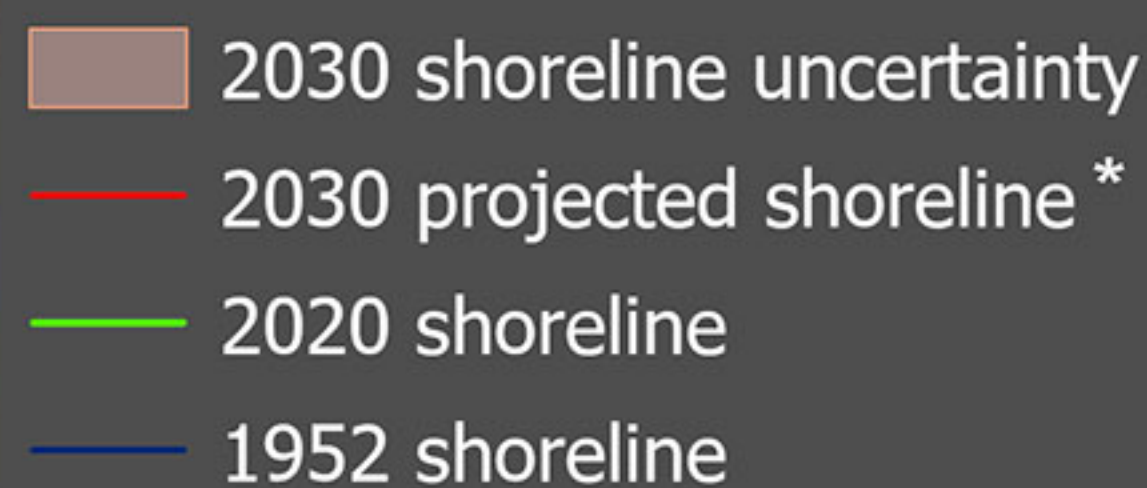
WLR Erosion Rate (meters per year)*



* In a weighted linear regression, the more reliable data are given greater emphasis or weight towards determining a best-fit line in the computation of rate-of-change statistics for shorelines, greater emphasis is placed on data points for which the position uncertainty is smaller.



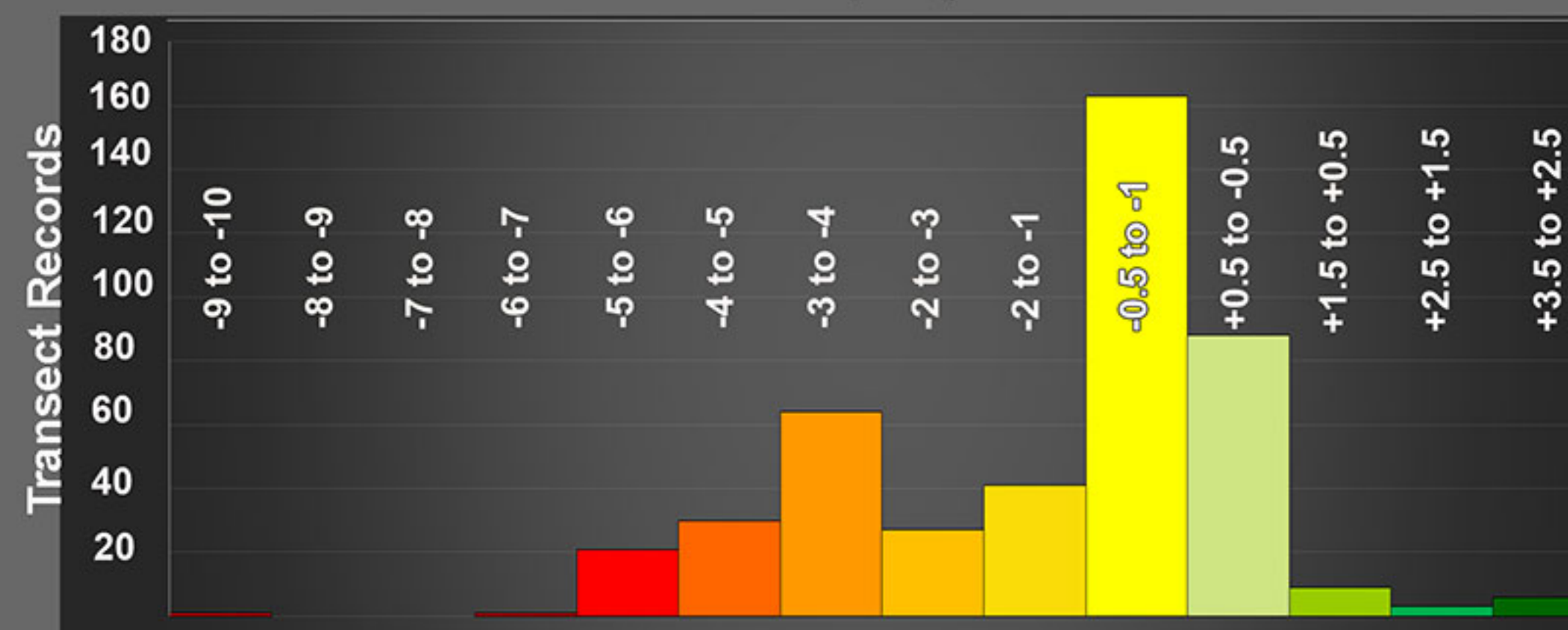
Shorelines



*Projected Shoreline (ESRI DSAS Beta Forecast Tool)

South Dillingham Shoreline Analysis and Projection

A histogram graph of the change analysis reveals that the mean rate of change is -2.04 meters per year (eroding), very limited areas are -5 to -10 meters per year.



PennState

